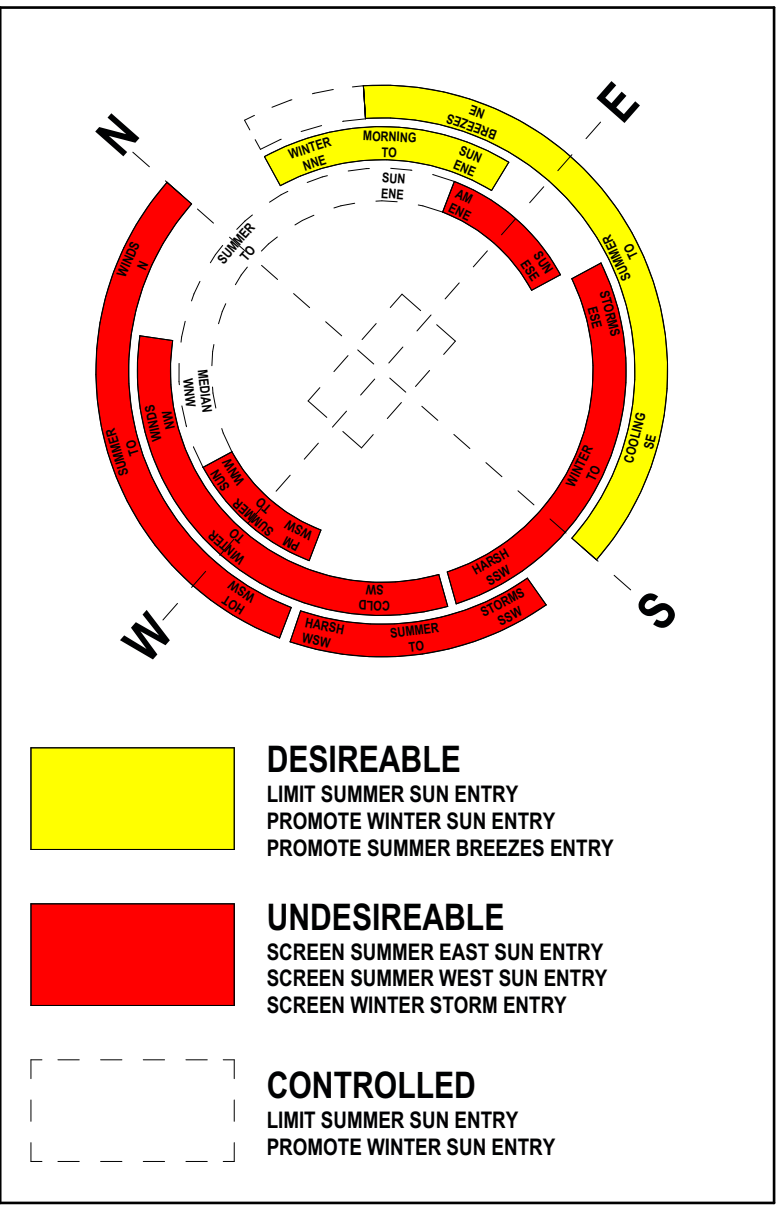
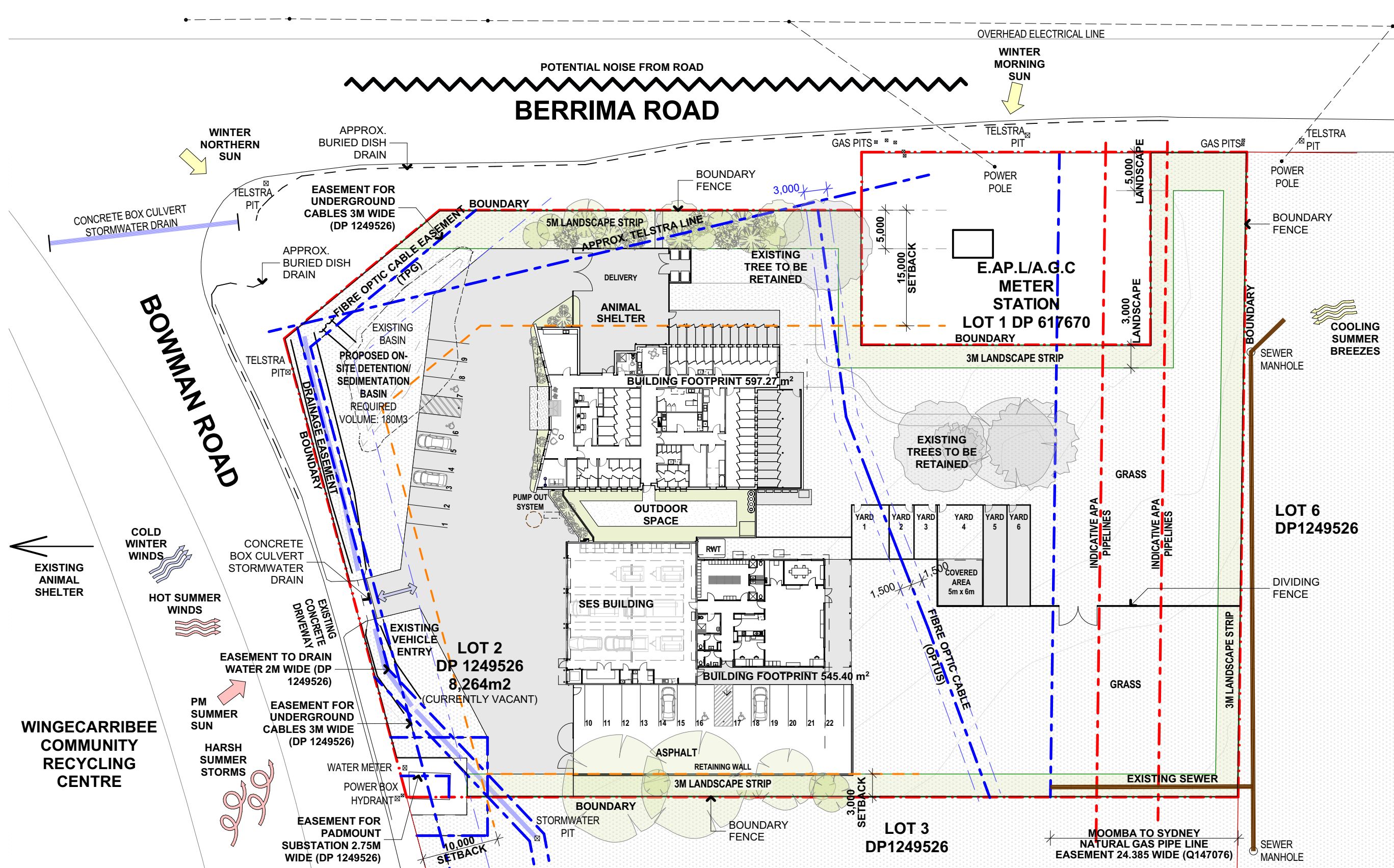


MOSS VALE ANIMAL SHELTER AND SES BUILDING

ISSUED FOR DEVELOPMENT APPLICATION

LOT 2 DP124956, 1 BOWMAN ROAD, MOSS VALE NSW 2577

REV	DATE	DESCRIPTION
A	13/05/2022	FOR DA SUBMISSION



DRAWING NO.	DRAWING NAME	SCALE
000	COVER PAGE	1:500
110	GROUND FLOOR PLAN	1:200
111	ROOF PLAN	1:200
200	ELEVATIONS & SECTIONS 1	1:100
201	ELEVATIONS & SECTIONS 2	1:100
440	MATERIAL AND FINISHES SCHEDULE	1:100



3 - EXTERNAL PERSPECTIVE

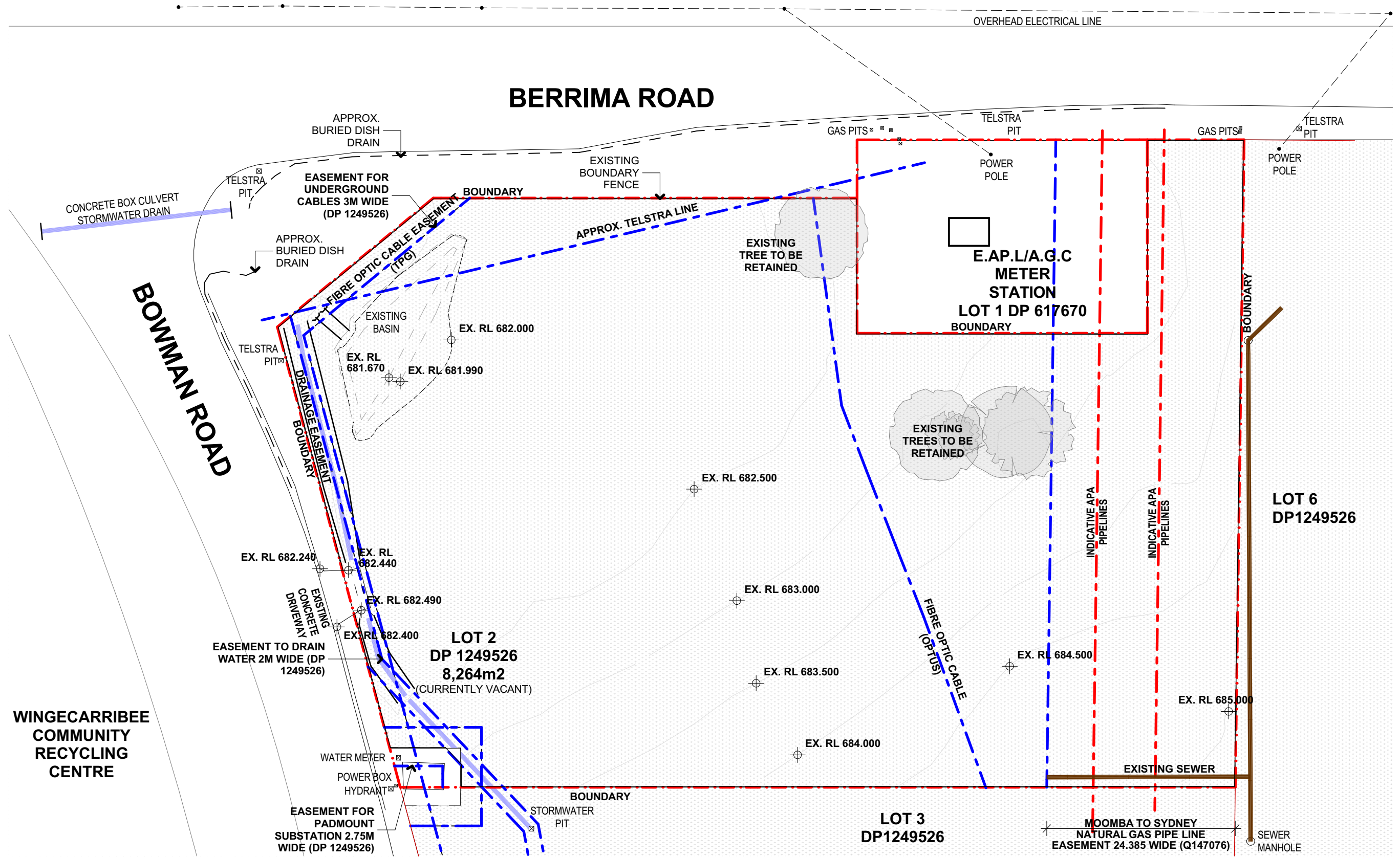


4 - EXTERNAL PERSPECTIVE

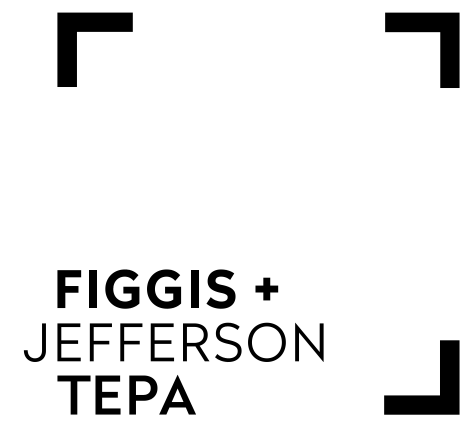


5 - EXTERNAL PERSPECTIVE

2 - SITE PLAN & SITE ANALYSIS
A1@1:500



1 - EXISTING & DEMOLITION PLAN
A1@1:500



FIGGIS + JEFFERSON TEPA
FIGGIS + JEFFERSON TEPA PTY LTD
220 Willoughby Road, Crows Nest, NSW 2045 Australia
E studio@figgis.com.au T 02 9438 5555
W www.figgis.com.au
Nominated Architect:
Stephen Figgis NSW ARB No. 3565

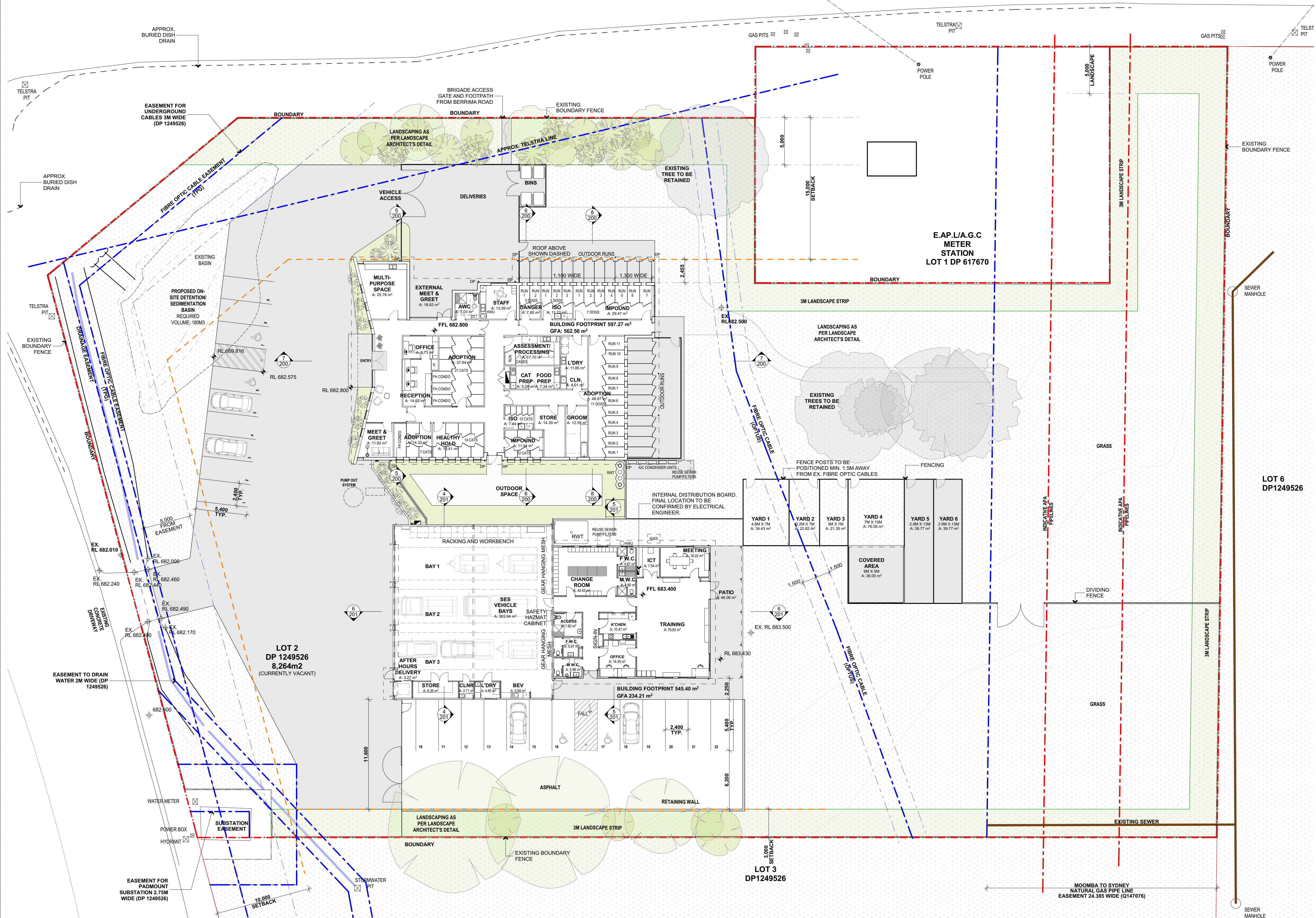
This drawing is protected under the Copyright Act 1968 and is the copyright of Figgis and Jefferson TEPA. Do not reproduce, modify or transmit this drawing without the permission of Figgis and Jefferson TEPA. Do not scale this drawing. Use figured dimensions only. Confirm all dimensions and levels on site prior to commencement of any work, preparation of shop drawings or fabrication of components.

PROJECT
ANIMAL SHELTER AND SES BUILDING
FOR
WINGECARRIBEE SHIRE COUNCIL
AT
LOT 2 DP 1249526
1 BOWMAN ROAD, MOSS VALE NSW 2577

DRAWING TITLE
COVER PAGE, EXISTING, DEMOLITION,
SITE & ANALYSIS PLANS
ARCHITECT
JC

DRAWN
RC
ISSUE
A
DRAWING NO.
3791 DA 000
SCALE
0m 5 10 15 20 25

BERRIMA ROAD



REV	DATE	DESCRIPTION
A	13/05/2022	FOR DA SUBMISSION

FIGGIS + JEFFERSON TEPA

FIGGIS + JEFFERSON TEPA PTY LTD
220 Willoughby Road, Crows Nest, NSW 2045 Australia

E studio@figgis.com.au T 02 9438 5555
W www.figgis.com.au

Nominated Architect:
Stephen Figgis NSW ARB No. 3545

This drawing is protected under the Copyright Act 1968 and is the copyright of Figgis and Jefferson TEPA. Do not reproduce, modify or transmit this drawing without the permission of Figgis and Jefferson TEPA. Do not scale this drawing. Use figured dimensions only. Confirm all dimensions and levels on site prior to commencement of any work, preparation of shop drawings or fabrication of components.

PROJECT
ANIMAL SHELTER AND SES BUILDING
FOR
WINGECARRIBEE SHIRE COUNCIL

AT
LOT 2 DP 1249526
1 BOWMAN ROAD, MOSS VALE NSW 2577

DRAWING TITLE
GROUND FLOOR PLAN

ARCHITECT
JC

DRAWN
RC

DRAWING NO.
3791 DA 110

ISSUE
A

SCALE
0m 2 4 6 8 10

GROSS FLOOR AREA	796.77 m²	CATS	29	DOGS	11
TOTAL SITE AREA	8,264m²	ADOPTION	14	ADOPTION	3
FLOOR SPACE RATIO	0.096:1	HEALTHY	10	ISOLATION	8
		IMPOUND	12	DANGEROUS	2
		TOTAL	65	TOTAL	24

GROUND FLOOR PLAN
A1@1:1200

1

[illegible]

FIGGIS + JEFFERSON TEPA

FIGGIS + JEFFERSON TEPA PTY LTD

220 Willoughby Road, Crows Nest, NSW 2065 Australia

E studio@figgis.com.au T 02 9438 5555

W www.figgis.com.au

Nominated Architect:
Figgis NSW ARB No. 3565

This drawing is protected under the Copyright Act 1968 and is the copyright of Figgis and Jefferson TEPA. Do not reproduce, modify or transmit this drawing without the permission of Figgis and Jefferson TEPA. Do not scale this drawing. Use square dimensions only. Confirm all dimensions are levels on site prior to commencement of any work, preparation of shop drawings or fabrication of components.

PROJECT

ANIMAL SHELTER AND SES BUILDING

FOR

WINGECARRIBEE SHIRE COUNCIL

AT

LOT 2 DP 1249526
1 BOWMAN ROAD, MOSS VALE NSW 2577

DRAWING TITLE

GROUND FLOOR PLAN

JC

ARCHITECT

JC

DRAWN

RC

TRUE NORTH

PROJECT NORTH

DRAWING NO.




ISSUE

3791 DA 110

B

SCALE

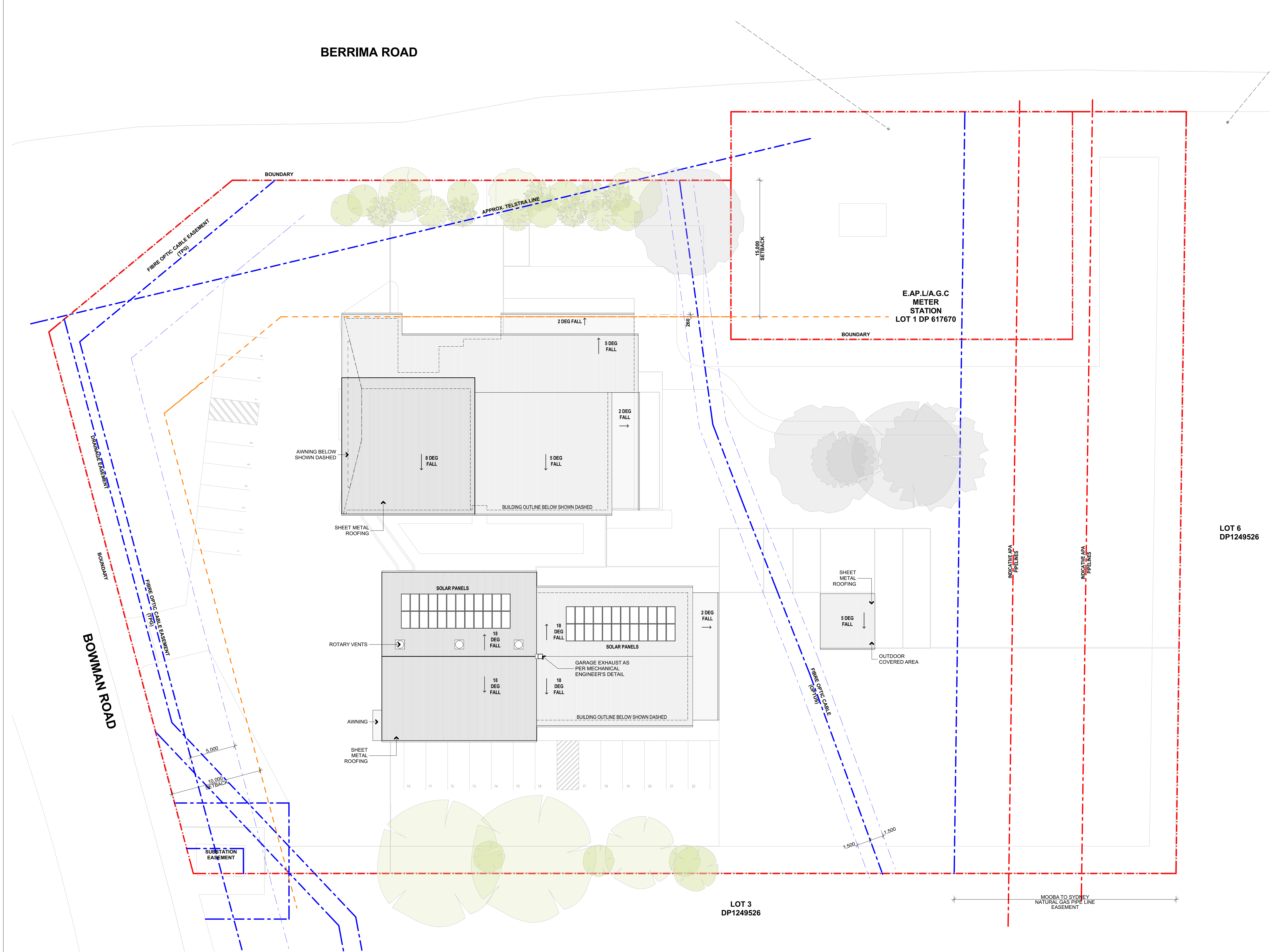
0m 2 4 6 8

DRAWING TITLE		ARCHITECT		DRAWN	
GROUND FLOOR PLAN		JC		RC	
		 TRUE NORTH		 PROJECT NORTH	
DRAWING NO.		ISSUE			
3791 DA 110		B			
SCALE					

GROSS FLOOR AREA	796.77 m ²	CATS		DOGS	
TOTAL SITE AREA	8,264m ²	ADOPTION	29	ADOPTION	11
FLOOR SPACE RATIO	0.096:1	HEALTHY	14	ISOLATION	3
		ISOLATION	10	IMPOUND	8
		IMPOUND	12	DANGEROUS	2
		TOTAL	65	TOTAL	24

BERRIMA ROAD

REV	DATE	DESCRIPTION
A	13/05/2022	FOR DA SUBMISSION



LOT 6
DP1249526

FIGGIS +
JEFFERSON
TEPA

FIGGIS + JEFFERSON TEPA PTY LTD
220 Willoughby Road, Crows Nest, NSW 2045 Australia

E studio@figgis.com.au T 02 9438 5555
W www.figgis.com.au

Nominated Architect:
Stephen Figgis NSW ARB No. 3565

This drawing is protected under the Copyright Act 1968 and is the copyright of Figgis and Jefferson TEPA. Do not reproduce, modify or transmit this drawing without the permission of Figgis and Jefferson TEPA. Do not scale this drawing. Use figured dimensions only. Confirm all dimensions and levels on site prior to commencement of any work, preparation of shop drawings or fabrication of components.

PROJECT
ANIMAL SHELTER AND SES BUILDING

FOR
WINGECARRIBEE SHIRE COUNCIL

AT
LOT 2 DP 1249526
1 BOWMAN ROAD, MOSS VALE NSW 2577

DRAWING TITLE
ROOF PLAN

ARCHITECT
JC

DRAWN
RC

TRUE NORTH

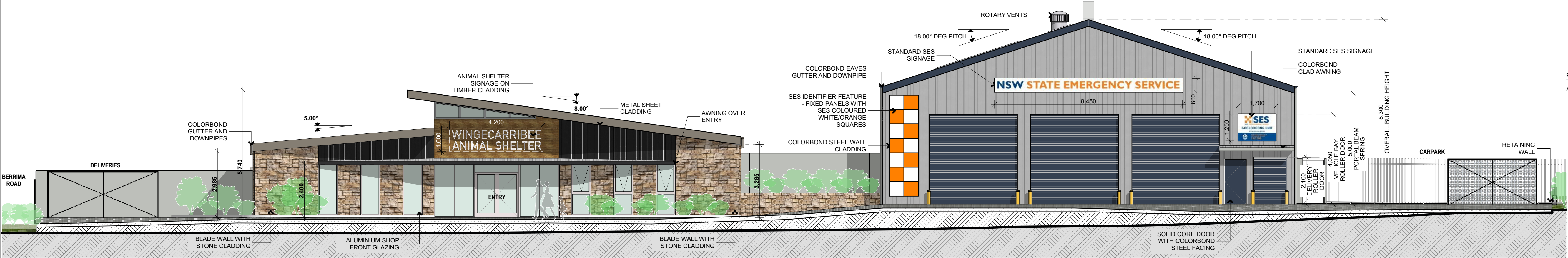
PROJECT NORTH

DRAWING NO. 3791 DA 111 ISSUE A

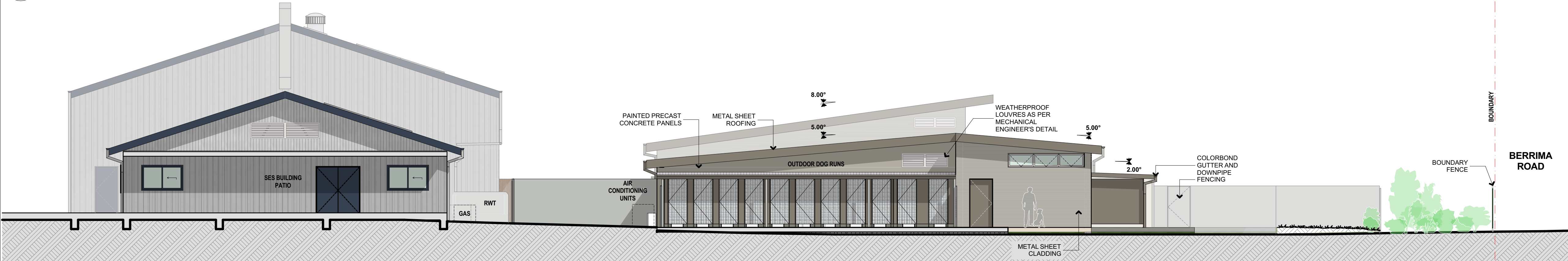
SCALE 0m 2 4 6 8 10

1
-

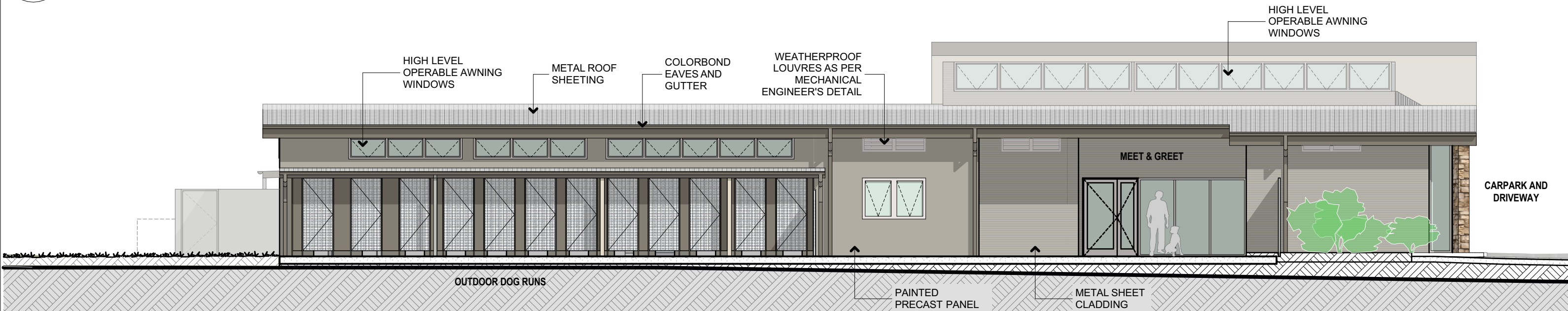
ROOF PLAN
A1@1:200



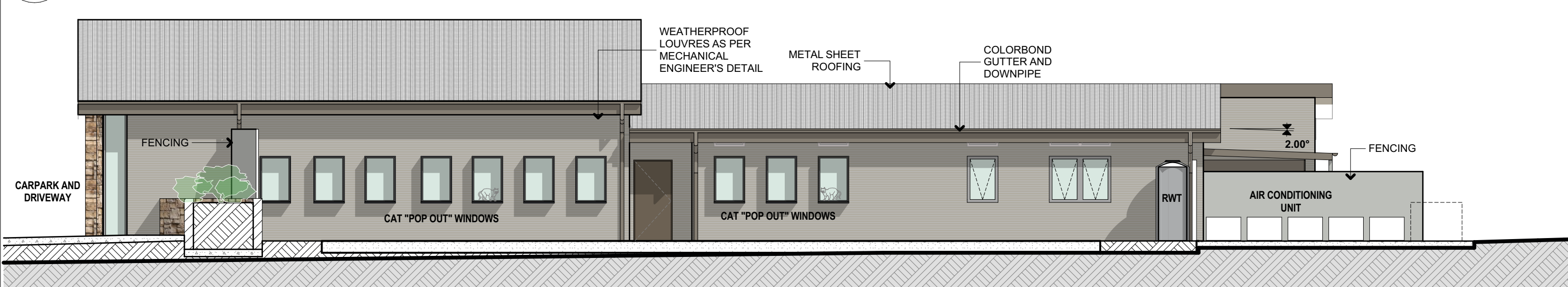
1
-
ANIMAL SHELTER & SES NORTH WEST ELEVATION
A1@1:100



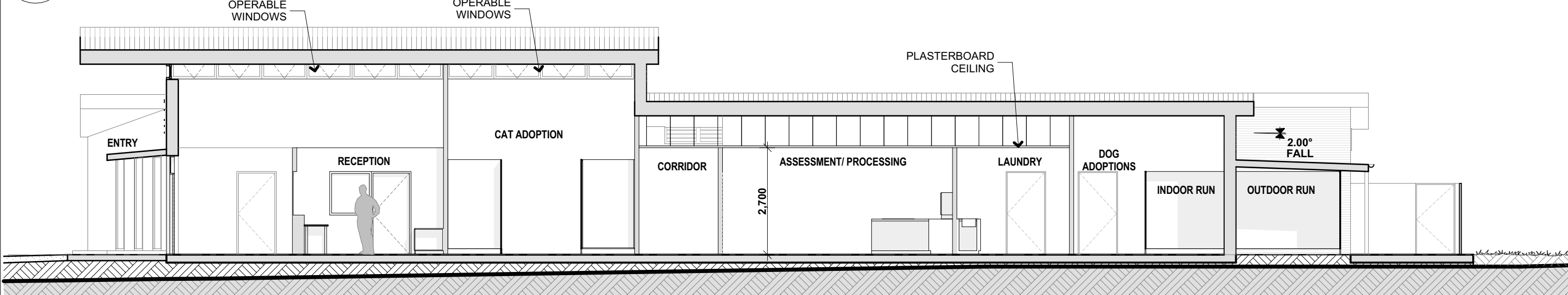
2
-
ANIMAL SHELTER SOUTH EAST ELEVATION
A1@1:100



3
-
ANIMAL SHELTER NORTH EAST ELEVATION
A1@1:100

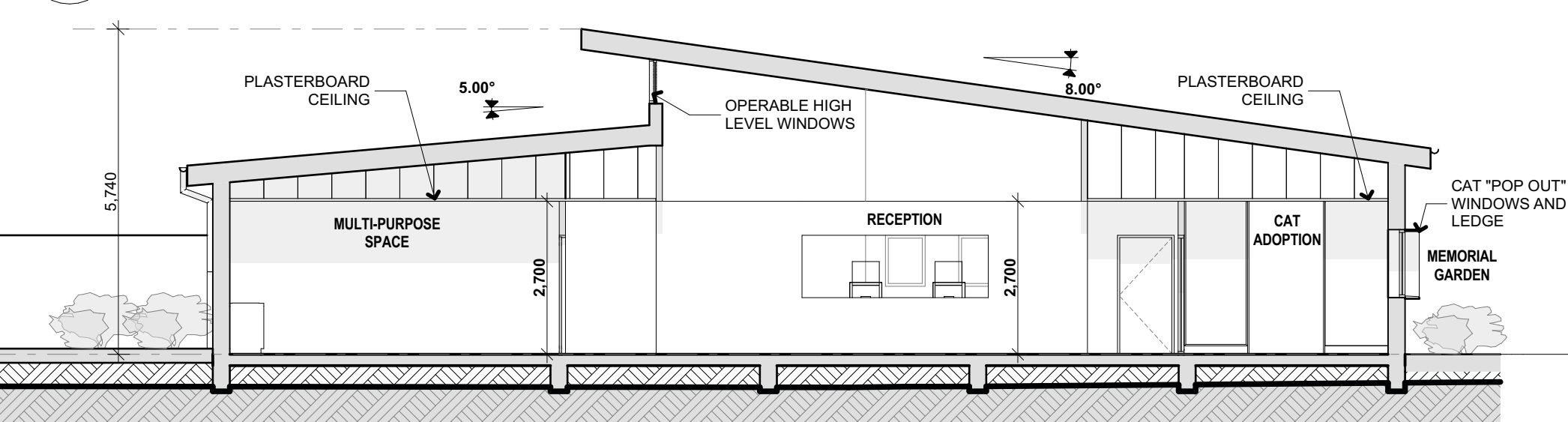


4
-
ANIMAL SHELTER SOUTH WEST ELEVATION
A1@1:100

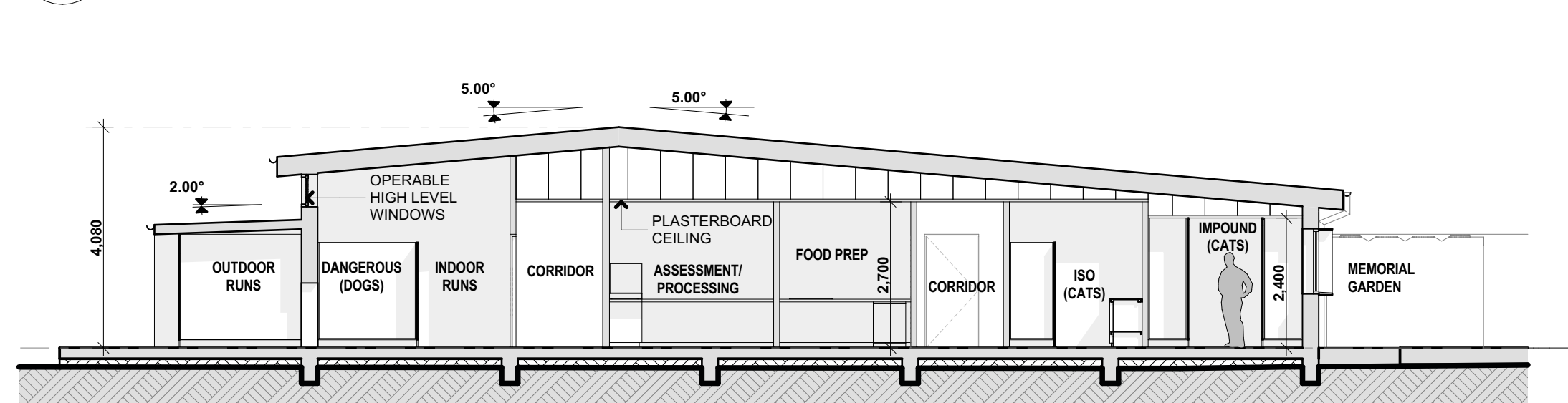


7
-
ANIMAL SHELTER - LONG SECTION
A1@1:100

8
-
ANIMAL SHELTER - SECTION
A1@1:100



5
-
ANIMAL SHELTER - SECTION
A1@1:100



6
-
ANIMAL SHELTER - SECTION
A1@1:100

REV	DATE	DESCRIPTION
A	13/05/2022	FOR DA SUBMISSION

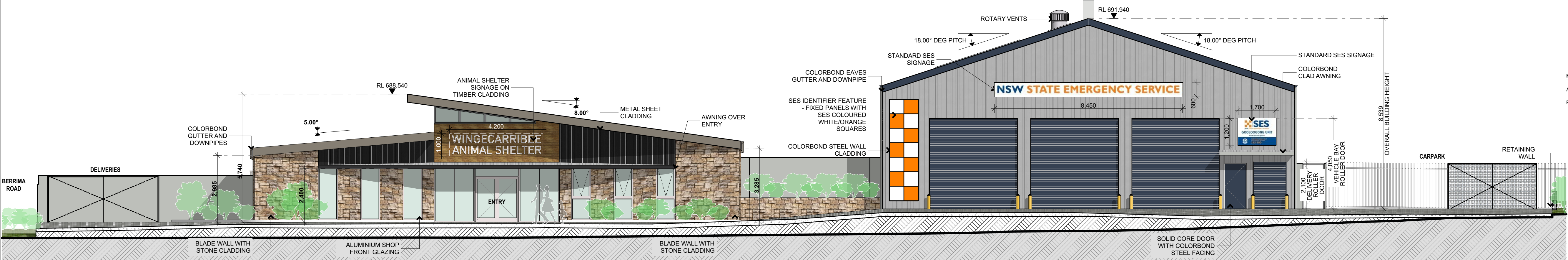
**FIGGIS +
JEFFERSON
TEPA**

FIGGIS + JEFFERSON TEPA PTY LTD
220 Willoughby Road, Crows Nest, NSW 2005 Australia
E studio@figgis.com.au T 02 9438 5555
W www.figgis.com.au
Nominated Architect:
Stephen Figgis NSW ARB No. 3545

This drawing is protected under the Copyright Act 1968 and is the copyright of Figgis and Jefferson TEPA. Do not reproduce, modify or transmit this drawing without the permission of Figgis and Jefferson TEPA. Do not scale this drawing. Use figured dimensions only. Confirm all dimensions and levels on site prior to commencement of any work, preparation of shop drawings or fabrication of components.

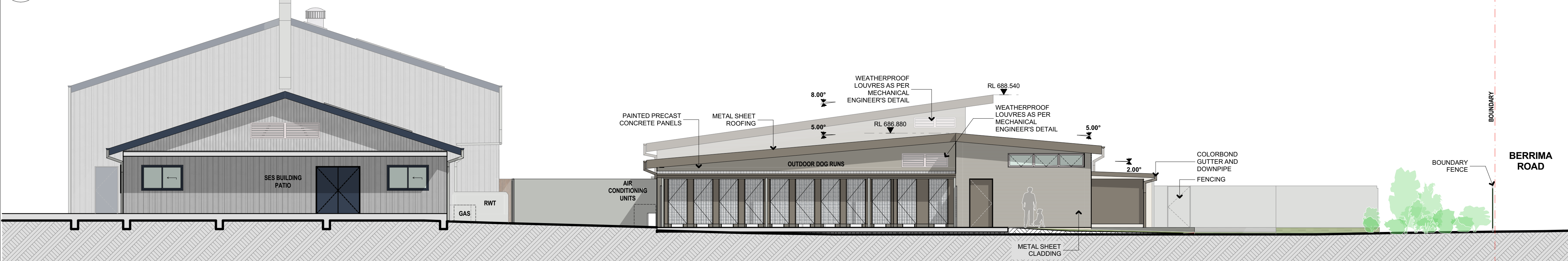
PROJECT
ANIMAL SHELTER AND SES BUILDING
FOR
WINGECARRIBEE SHIRE COUNCIL
AT
LOT 2 DP 1249526
1 BOWMAN ROAD, MOSS VALE NSW 2577

DRAWING TITLE
ELEVATIONS & SECTIONS 1
ARCHITECT
JC
DRAWN
RC
DRAWING NO.
3791 DA 200
ISSUE
A
SCALE
0m 1 2 3 4 5



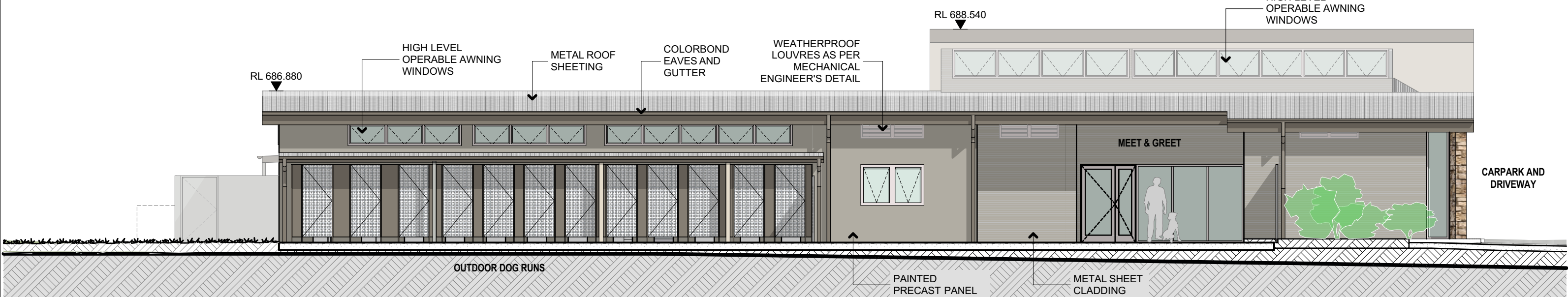
1
-

ANIMAL SHELTER & SES NORTH WEST ELEVATION
A1@1:100



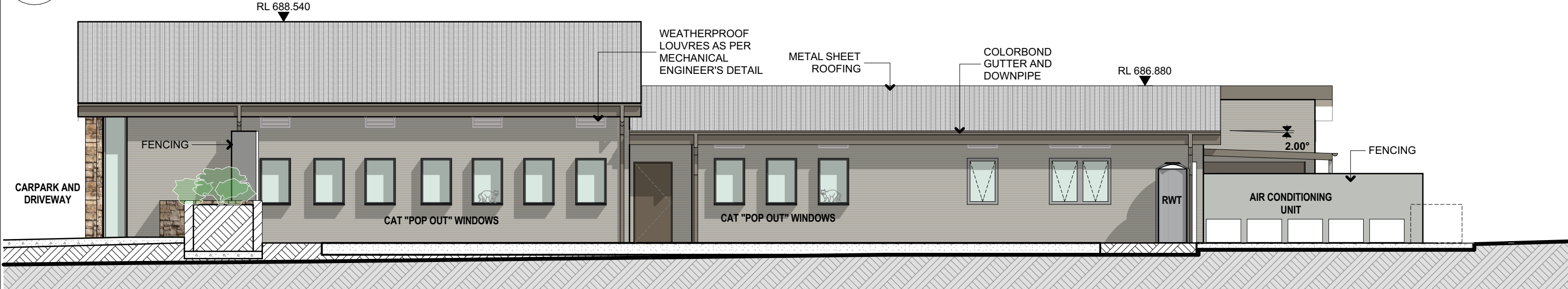
2
-

ANIMAL SHELTER SOUTH EAST ELEVATION
A1@1:100



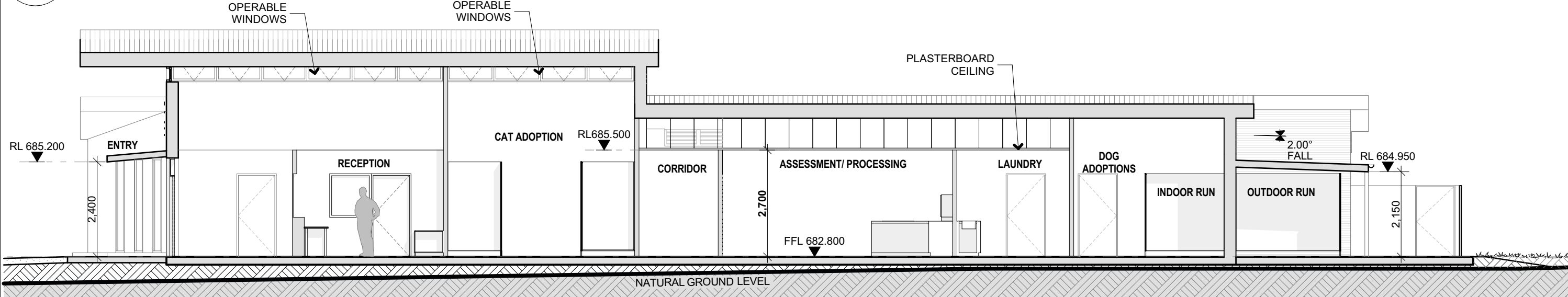
3
-

ANIMAL SHELTER NORTH EAST ELEVATION
A1@1:100



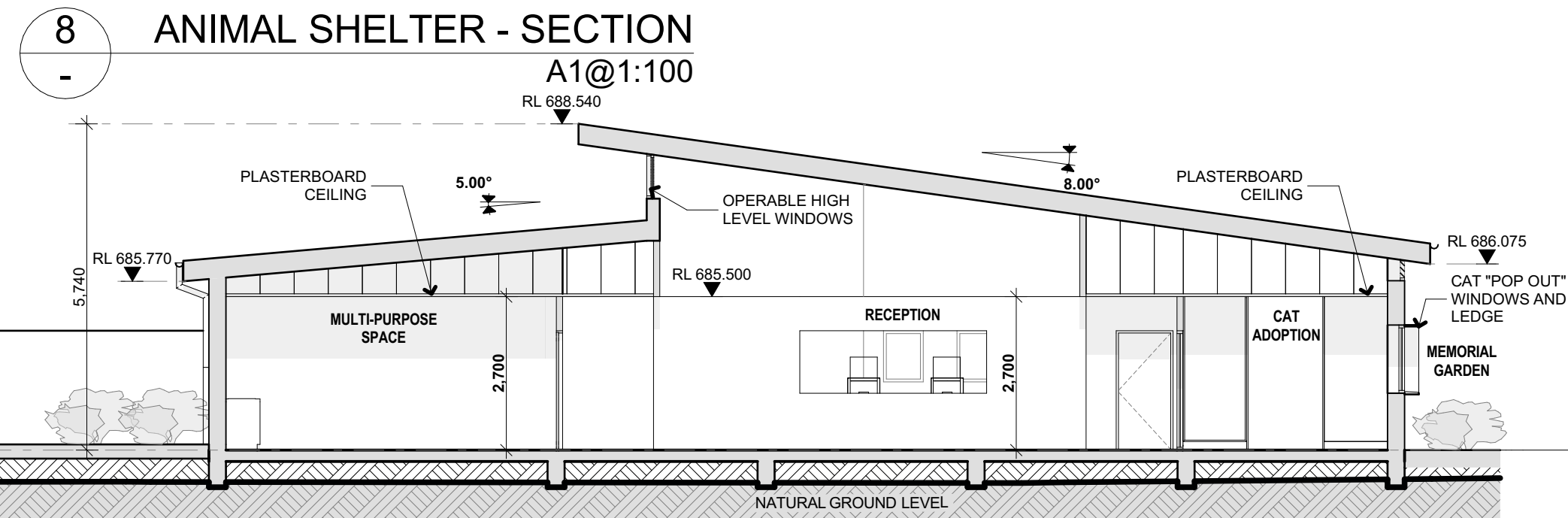
4
-

ANIMAL SHELTER SOUTH WEST ELEVATION
A1@1:100

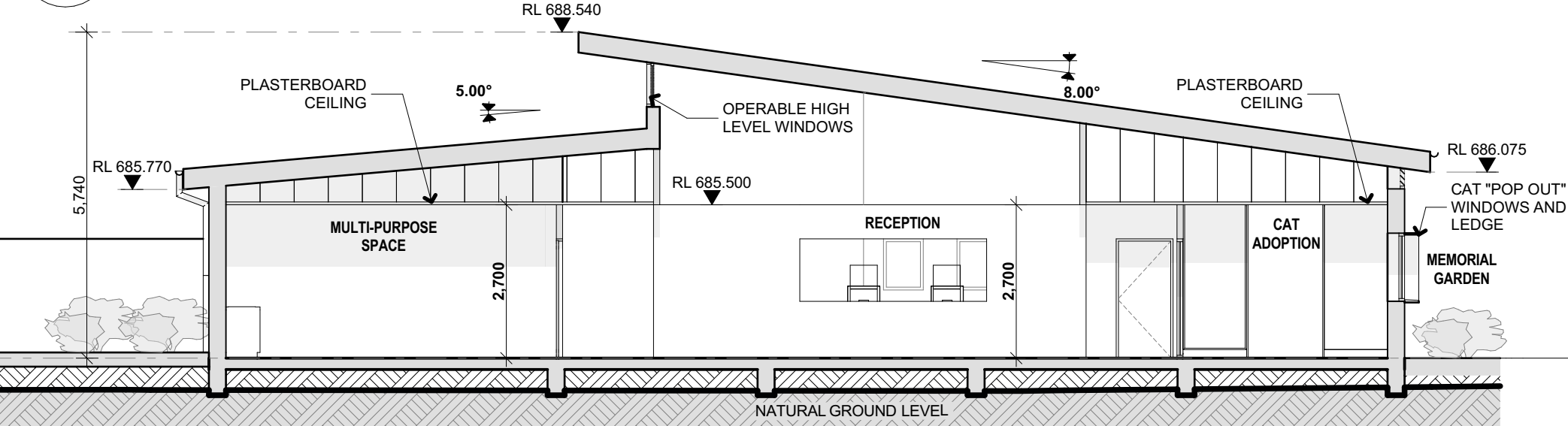


7
-

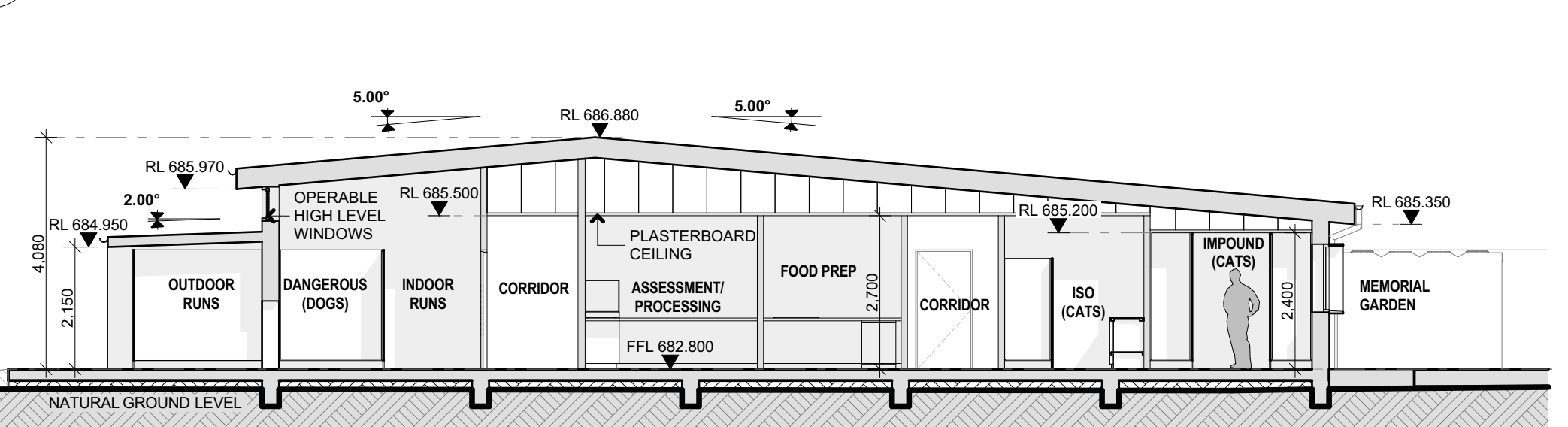
ANIMAL SHELTER - LONG SECTION
A1@1:100



ANIMAL SHELTER - SECTION
A1@1:100



ANIMAL SHELTER - SECTION
A1@1:100



ANIMAL SHELTER - SECTION
A1@1:100

REV	DATE	DESCRIPTION
A	13/05/2022	FOR DA SUBMISSION
B	27/05/2022	AMENDED FOR DA SUBMISSION

FIGGIS +
JEFFERSON
TEPA

FIGGIS + JEFFERSON TEPAPTY LTD
220 Willoughby Road, Crows Nest, NSW 2005 Australia

E studio@figgis.com.au T 02 9438 5555

W www.figgis.com.au

Nominated Architect:
Stephen Figgis NSW ARB No. 3545

This drawing is protected under the Copyright Act 1968 and is the copyright of Figgis and Jefferson TEPA. Do not reproduce, modify or transmit this drawing without the permission of Figgis and Jefferson TEPA. Do not scale this drawing. Use figured dimensions only. Confirm all dimensions and levels on site prior to commencement of any work, preparation of shop drawings or fabrication of components.

PROJECT
ANIMAL SHELTER AND SES BUILDING

FOR
WINGECARRIBEE SHIRE COUNCIL

AT
LOT 2 DP 1249526
1 BOWMAN ROAD, MOSS VALE NSW 2577

DRAWING TITLE
ELEVATIONS & SECTIONS 1

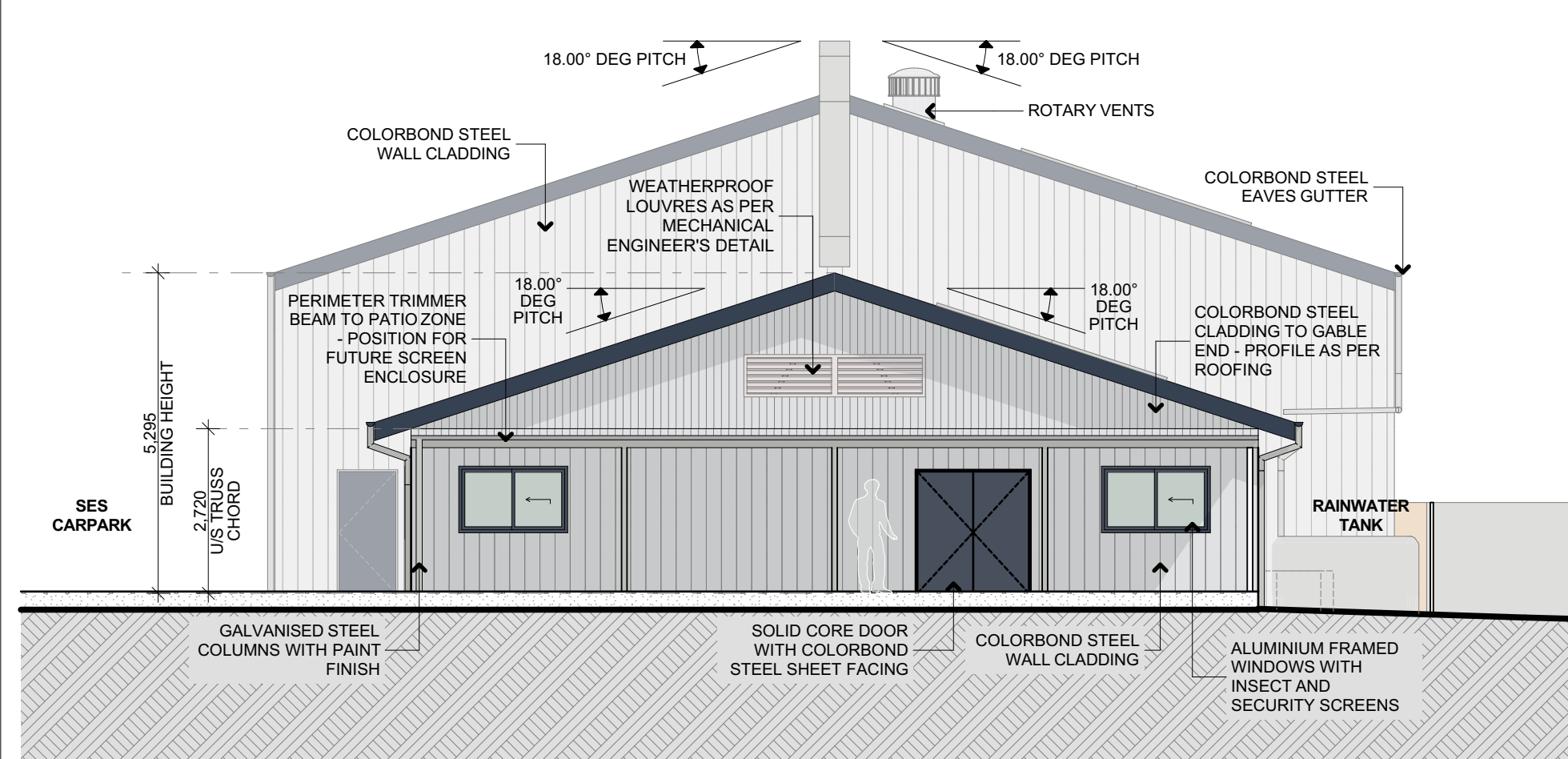
ARCHITECT
JC

DRAWN
RC

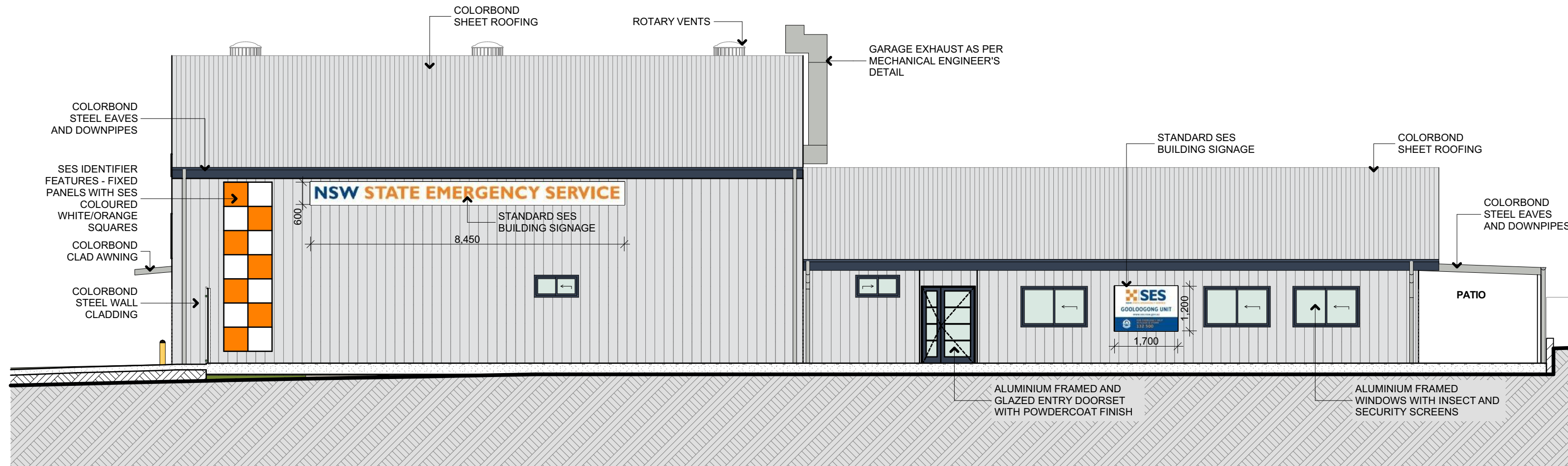
DRAWING NO.
3791 DA 200

ISSUE
B

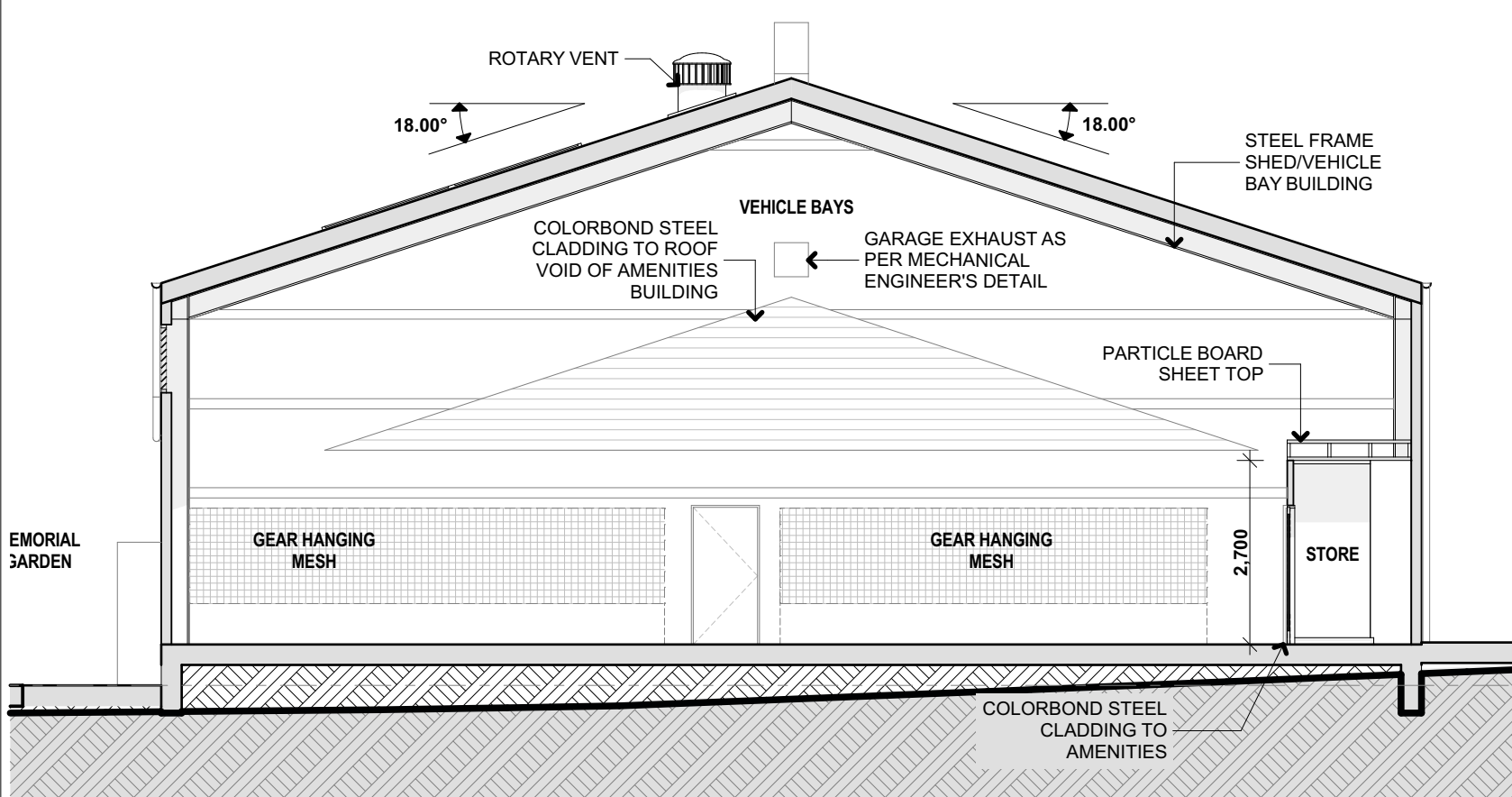
SCALE
0m 1 2 3 4 5



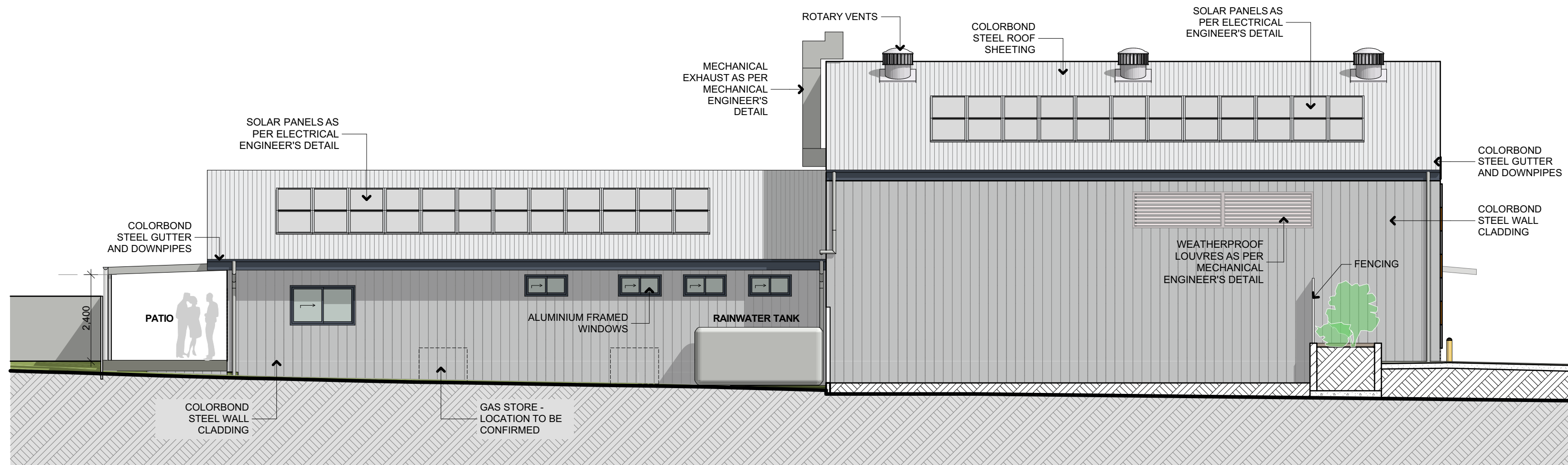
1 SOUTH EAST ELEVATION
A1@1:100



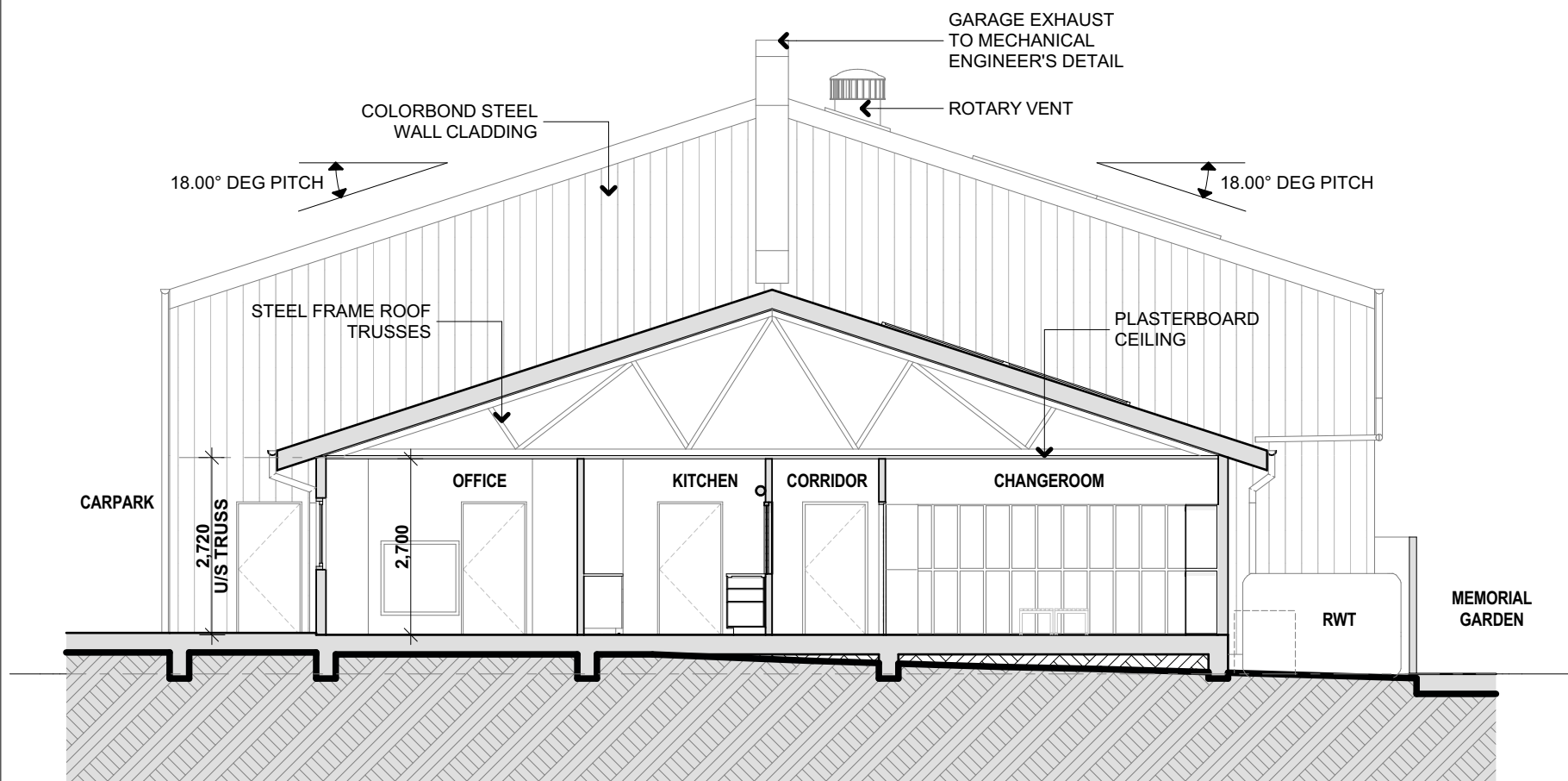
2 SOUTH WEST ELEVATION
A1@1:100



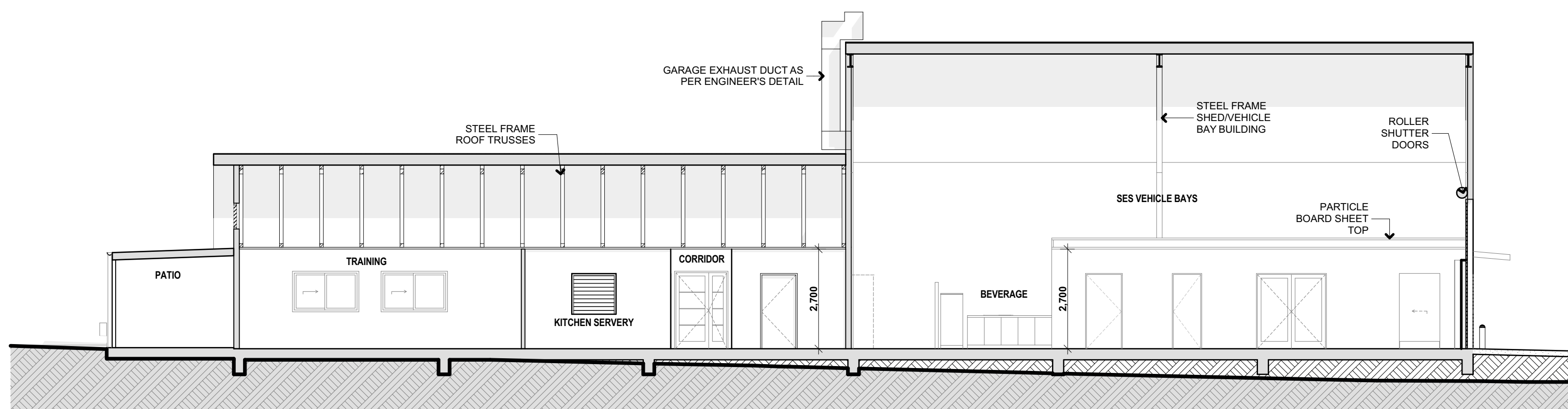
4 GARAGE SECTION
A1@1:100



3 NORTH EAST ELEVATION
A1@1:100



5 SECTION
A1@1:100



6 SES LONG SECTION
A1@1:100

REV	DATE	DESCRIPTION
A	13/05/2022	FOR DA SUBMISSION

FIGGIS + JEFFERSON TEPA

FIGGIS + JEFFERSON TEPA PTY LTD
220 Willoughby Road, Crows Nest, NSW 2065 Australia

E studio@figgis.com.au T 02 9438 5555
W www.figgis.com.au

Nominated Architect:
Stephen Figgis NSW ARB No. 3545

This drawing is protected under the Copyright Act 1968 and is the copyright of Figgis and Jefferson TEPA. Do not reproduce, modify or transmit this drawing without the permission of Figgis and Jefferson TEPA. Do not scale this drawing. Use figured dimensions only. Confirm all dimensions and levels on site prior to commencement of any work, preparation of shop drawings or fabrication of components.

PROJECT
ANIMAL SHELTER AND SES BUILDING

FOR
WINGECARRIBEE SHIRE COUNCIL

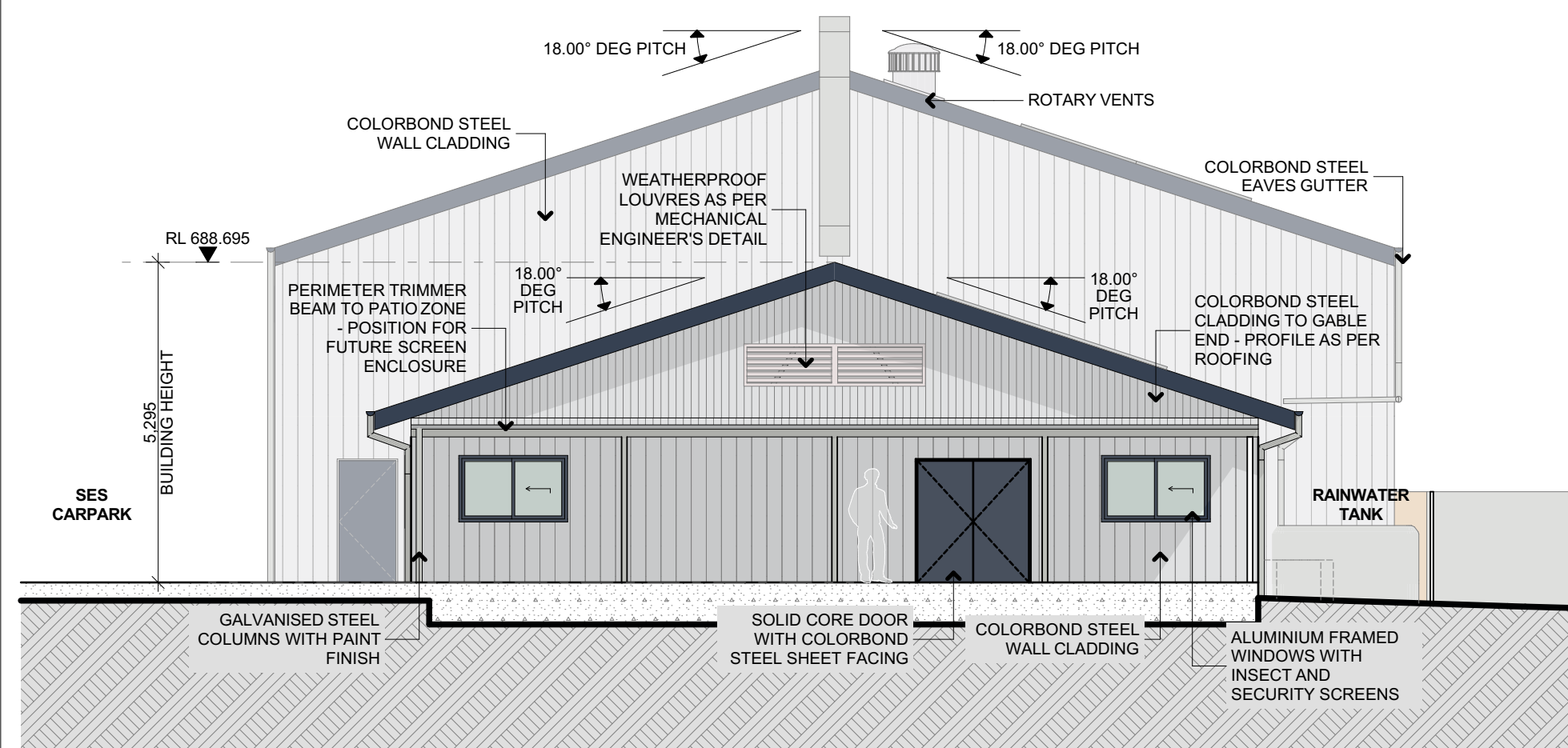
AT
LOT 2 DP 1249526
1 BOWMAN ROAD, MOSS VALE NSW 2577

DRAWING TITLE
ELEVATIONS & SECTIONS 2

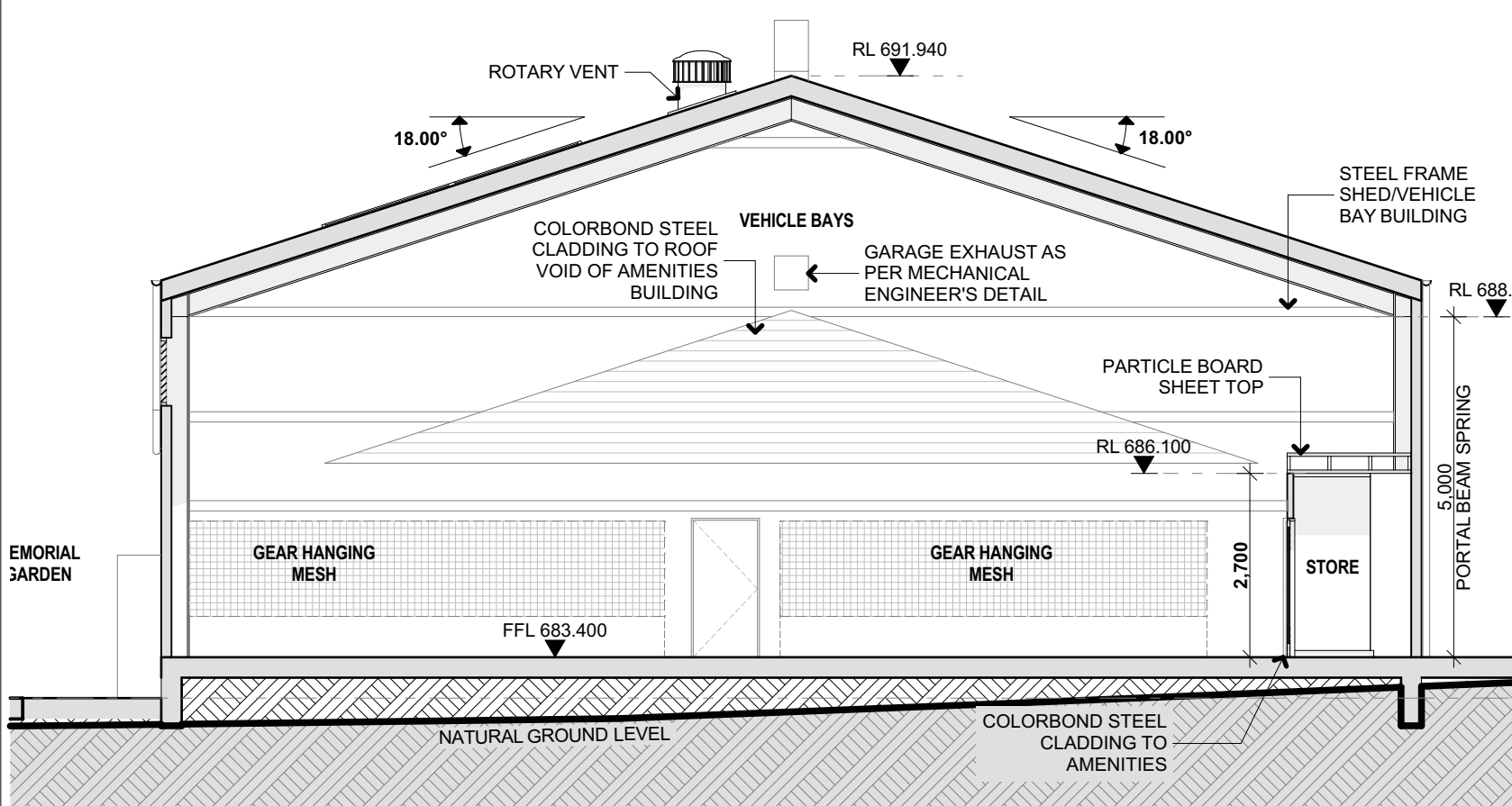
ARCHITECT
JC

DRAWN
RC

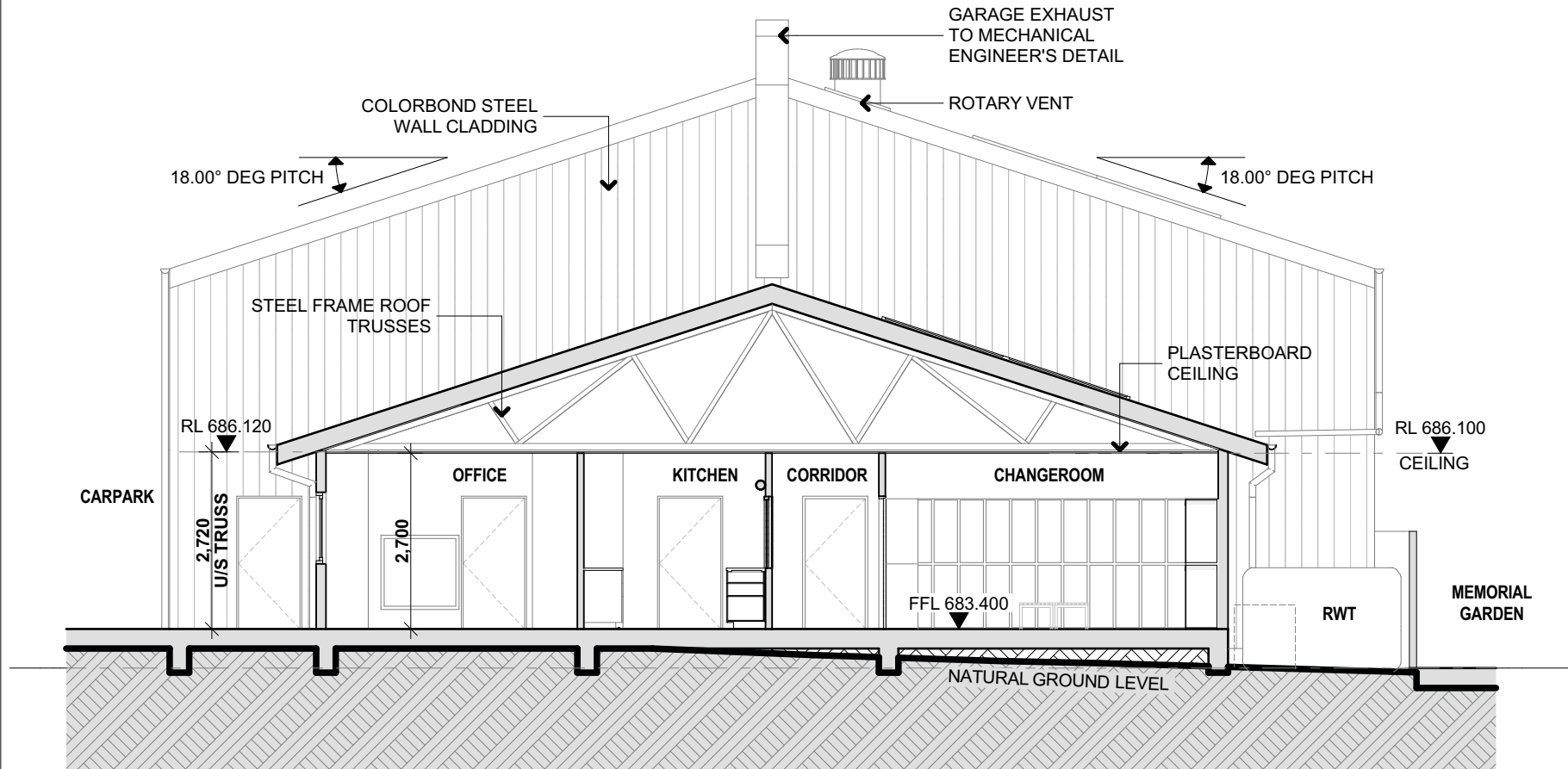
DRAWING NO.	ISSUE
3791 DA 201	A
SCALE	0m 1 2 3 4 5



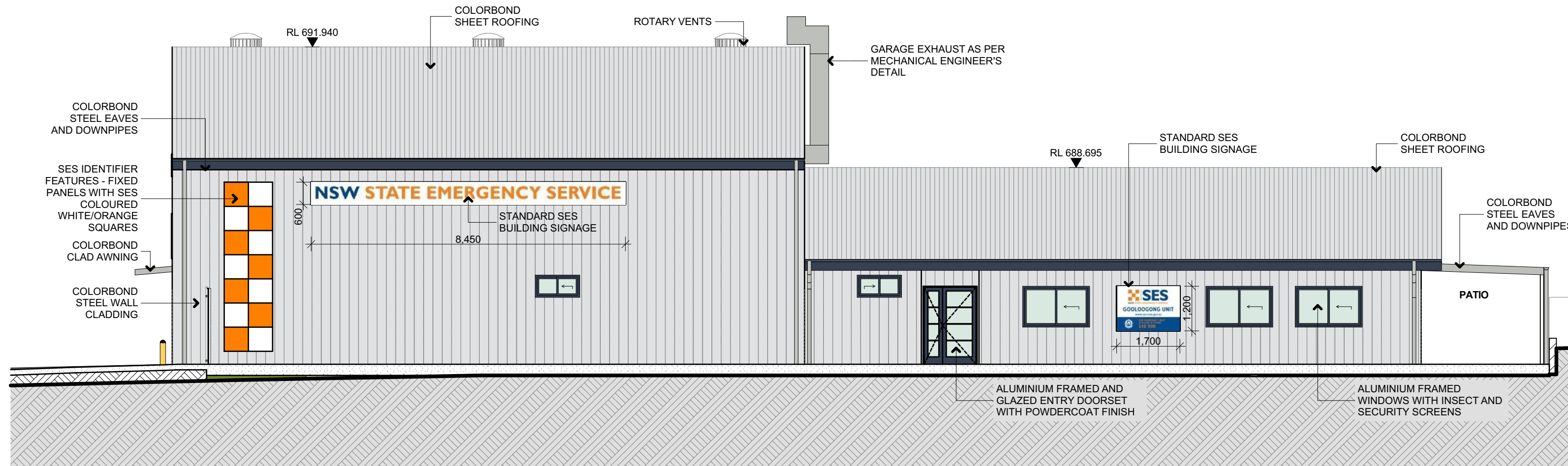
1 SOUTH EAST ELEVATION
A1@1:100



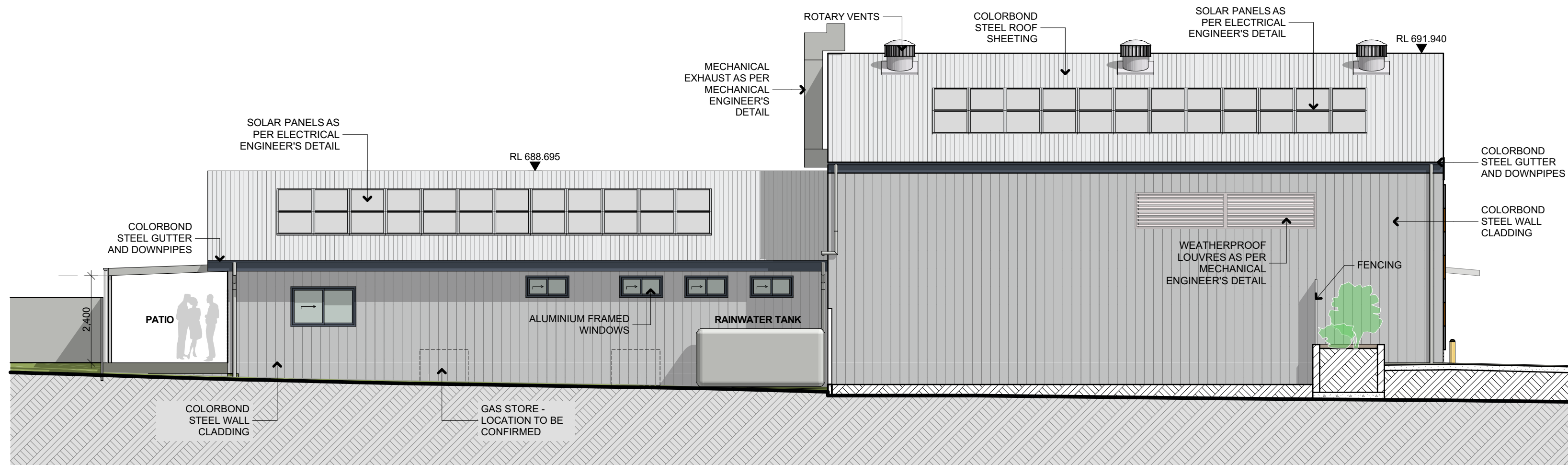
4 GARAGE SECTION
A1@1:100



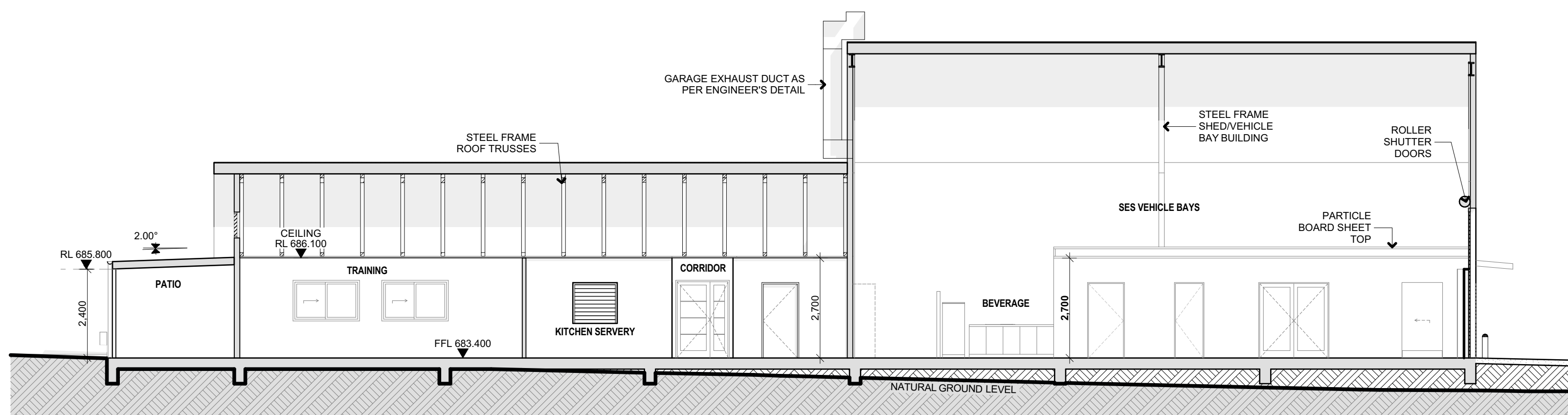
5 SECTION
A1@1:100



2 SOUTH WEST ELEVATION
A1@1:100



3 NORTH EAST ELEVATION
A1@1:100



6 SES LONG SECTION
A1@1:100

REV	DATE	DESCRIPTION
A	13/05/2022	FOR DA SUBMISSION
B	27/05/2022	AMENDED FOR DA SUBMISSION

FIGGIS + JEFFERSON TEPA

FIGGIS + JEFFERSON TEPA PTY LTD
220 Willoughby Road, Crows Nest, NSW 2045 Australia

E studio@figgis.com.au T 02 9438 5555
W www.figgis.com.au

Nominated Architect:
Stephen Figgis NSW ARB No. 3545

This drawing is protected under the Copyright Act 1968 and is the copyright of Figgis and Jefferson TEPA. Do not reproduce, modify or transmit this drawing without the permission of Figgis and Jefferson TEPA. Do not scale this drawing. Use figured dimensions only. Confirm all dimensions and levels on site prior to commencement of any work, preparation of shop drawings or fabrication of components.

PROJECT
ANIMAL SHELTER AND SES BUILDING

FOR
WINGECARRIBEE SHIRE COUNCIL

AT
LOT 2 DP 1249526
1 BOWMAN ROAD, MOSS VALE NSW 2577

DRAWING TITLE
ELEVATIONS & SECTIONS 2

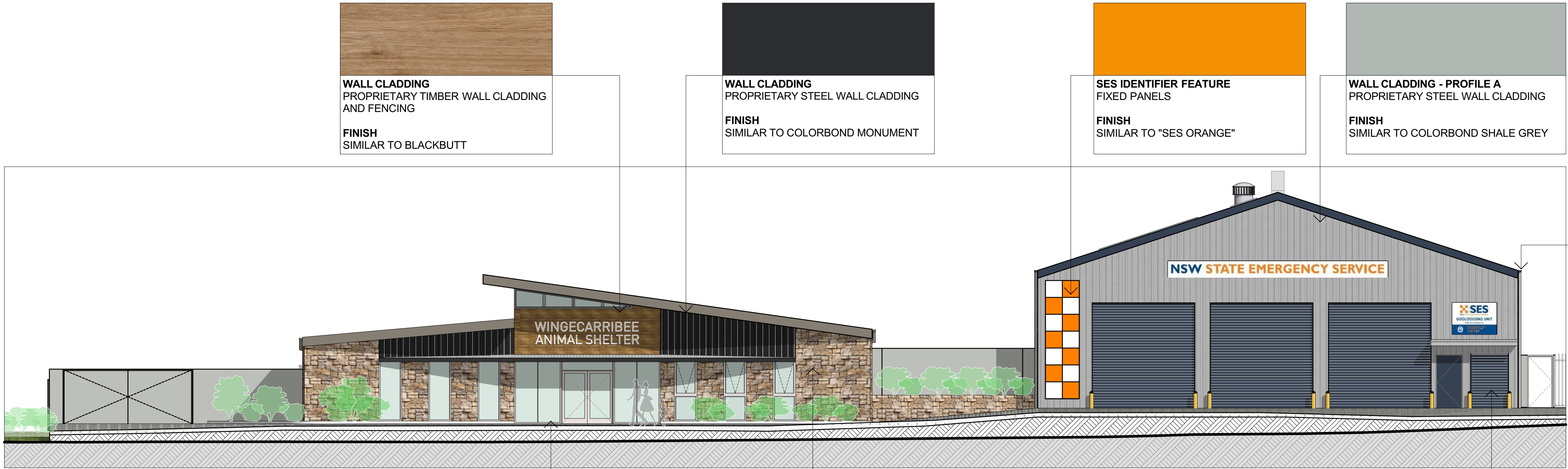
ARCHITECT
JC

DRAWN
RC

DRAWING NO.
3791 DA 201

ISSUE
B

SCALE
0m 1 2 3 4 5



1 NORTH WEST ELEVATION
A1@1:100

WALL CLADDING
PROPRIETARY TIMBER WALL CLADDING
AND FENCING

FINISH
SIMILAR TO BLACKBUTT

WALL CLADDING
PROPRIETARY STEEL WALL CLADDING

FINISH
SIMILAR TO COLORBOND MONUMENT

SES IDENTIFIER FEATURE
FIXED PANELS

FINISH
SIMILAR TO "SES ORANGE"

WALL CLADDING - PROFILE A
PROPRIETARY STEEL WALL CLADDING

FINISH
SIMILAR TO COLORBOND SHALE GREY

SES BUILDING
GUTTERS AND FASCIAS
PROPRIETARY STEEL PRODUCTS

FINISH
SIMILAR TO COLORBOND DEEP OCEAN

ANIMAL SHELTER
GUTTERS, FASCIAS AND DOWNPIPES
PROPRIETARY STEEL PRODUCTS

FINISH
SIMILAR TO COLORBOND GULLY

WINDOW FRAMES
PROPRIETARY WINDOW SUITE

FINISH
SIMILAR TO DULUX APO GREY SATIN

WALL CLADDING
PROPRIETARY STONE WALL CLADDING

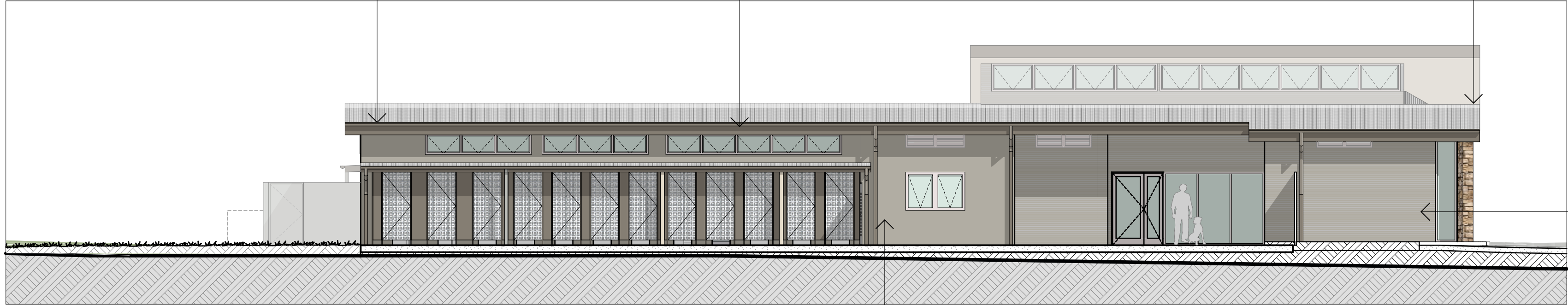
FINISH
SIMILAR TO SAREEN STONE
COTSWOLD WALL CLADDING

ROOF SHEETING
PROPRIETARY METAL ROOF SHEETING

FINISH
SIMILAR TO COLORBOND SHALE GREY

SES BUILDING
EXTERNAL DOORS & ROLLER SHUTTERS

FINISH
SIMILAR TO COLORBOND DEEP OCEAN



2 ANIMAL SHELTER NORTH EAST ELEVATION
A1@1:100

SES IDENTIFIER FEATURE
FIXED PANELS

FINISH
SIMILAR TO "SES ORANGE"

WALL CLADDING - PROFILE A
PROPRIETARY STEEL WALL CLADDING

FINISH
SIMILAR TO COLORBOND SHALE GREY

PRECAST CONCRETE WALL
PROPRIETARY PAINT SYSTEM

FINISH
SIMILAR TO COLORBOND DUNE

WINDOW FRAMES
PROPRIETARY WINDOW SUITE

FRAME FINISH
SIMILAR TO COLORBOND DEEP OCEAN

WALL CLADDING
PROPRIETARY STEEL WALL CLADDING

FINISH
SIMILAR TO DULUX COLORBOND DUNE



3 SES SOUTH WEST ELEVATION
A1@1:100

ROOF SHEETING
PROPRIETARY METAL ROOF SHEETING

FINISH
SIMILAR TO COLORBOND SHALE GREY

WALL CLADDING - PROFILE B
PROPRIETARY STEEL WALL CLADDING

FINISH
SIMILAR TO COLORBOND SHALE GREY

DOWNPIPES
PROPRIETARY STEEL PRODUCTS

FINISH
SIMILAR TO COLORBOND SHALE GREY

REV	DATE	DESCRIPTION
A	13/05/2022	FOR DA SUBMISSION

FIGGIS +
JEFFERSON
TEPA

FIGGIS + JEFFERSON TEPAPTY LTD
220 Willoughby Road, Crows Nest, NSW 2045 Australia

E studio@figgis.com.au T 02 9438 5555
W www.figgis.com.au

Nominated Architect:
Stephen Figgis NSW ARB No. 3545

This drawing is protected under the Copyright Act 1968 and is the copyright of Figgis and Jefferson TEPA. Do not reproduce, modify or transmit this drawing without the permission of Figgis and Jefferson TEPA. Do not scale this drawing. Use figured dimensions only. Confirm all dimensions and levels on site prior to commencement of any work, preparation of shop drawings or fabrication of components.

PROJECT
ANIMAL SHELTER AND SES BUILDING

FOR
WINGECARRIBEE SHIRE COUNCIL

AT
LOT 2 DP 1249526
1 BOWMAN ROAD, MOSS VALE NSW 2577

DRAWING TITLE
MATERIAL AND FINISHES SCHEDULE

ARCHITECT
JC

DRAWN
RC

DRAWING NO. ISSUE

3791 DA 440

A

SCALE 0m

